



# SUIT CUSTOMIZATION TUTOR **TECNICA-EVO**

IA859E

NEW STANDARD FIA 8856-2018



## GREY AREA SHINE FABRIC

## WHITE AREA

FOR SHOULDER STRIPES A DIFFERENT AND MONOCHROMATIC COLOR MUST BE USED

CYAN XTI-148-244	ROYAL BLUE XTI-148-041	NAVY BLUE XTI-148-042	VIOLET XTI-148-V	VIOLET XTI-148-2583	MAGENTA XTI-148-225C	RED XTI-148-061	FLUO ORANGE XTI-148-090	FLUO YELLOW XTI-148-099
WHITE XTI-148-020	SILVER XTI-148-081	DARK GREY XTI-148-082	BLACK XTI-148-071	JAGUAR GREEN XTI-148-033	FLAG GREEN XTI-148-032			

## CYAN AREA

STRETCH DRY SYSTEM FABRIC - NOT PRINTABLE/EMBROIDERABLE

ROYAL BLUE XTI-608-041	NAVY BLUE XTI-608-042	RED XTI-608-061	DARK GREY XTI-608-082	BLACK XTI-608-071	FLUO YELLOW XTI-608-099
---------------------------	--------------------------	--------------------	--------------------------	----------------------	----------------------------

## PINK AREA

INTERLOCK FABRIC - NOT PRINTABLE/EMBROIDERABLE

\*while stocks last

ROYAL BLUE XTI-102-041	NAVY BLUE XTI-102-042	RED XTI-102-061	DARK GREY XTI-102-082	BLACK XTI-102-071	SILVER XTI-102-081	WHITE XTI-102-020	ECRÙ XTI-102-028	GREEN* XTI-102-031
FLUO YELLOW XTI-102-099	YELLOW XTI-102-051							

## YELLOW AREA

WRIST AND ANKLE CUFF'S FABRIC

\*while stocks last

ROYAL BLUE XTI-105-N-041	NAVY BLUE XTI-105-N-042	RED XTI-105-N-061	DARK GREY XTI-105-N-082	BLACK XTI-105-N-071	SILVER XTI-105-N-081	WHITE XTI-105-N-020	ECRÙ XTI-105-N-022	YELLOW* XTI-105-N051	BROWN* XTI-105-N010
-----------------------------	----------------------------	----------------------	----------------------------	------------------------	-------------------------	------------------------	-----------------------	-------------------------	------------------------

## GREEN AREA

DRY SYSTEM FABRIC - NOT PRINTABLE/EMBROIDERABLE

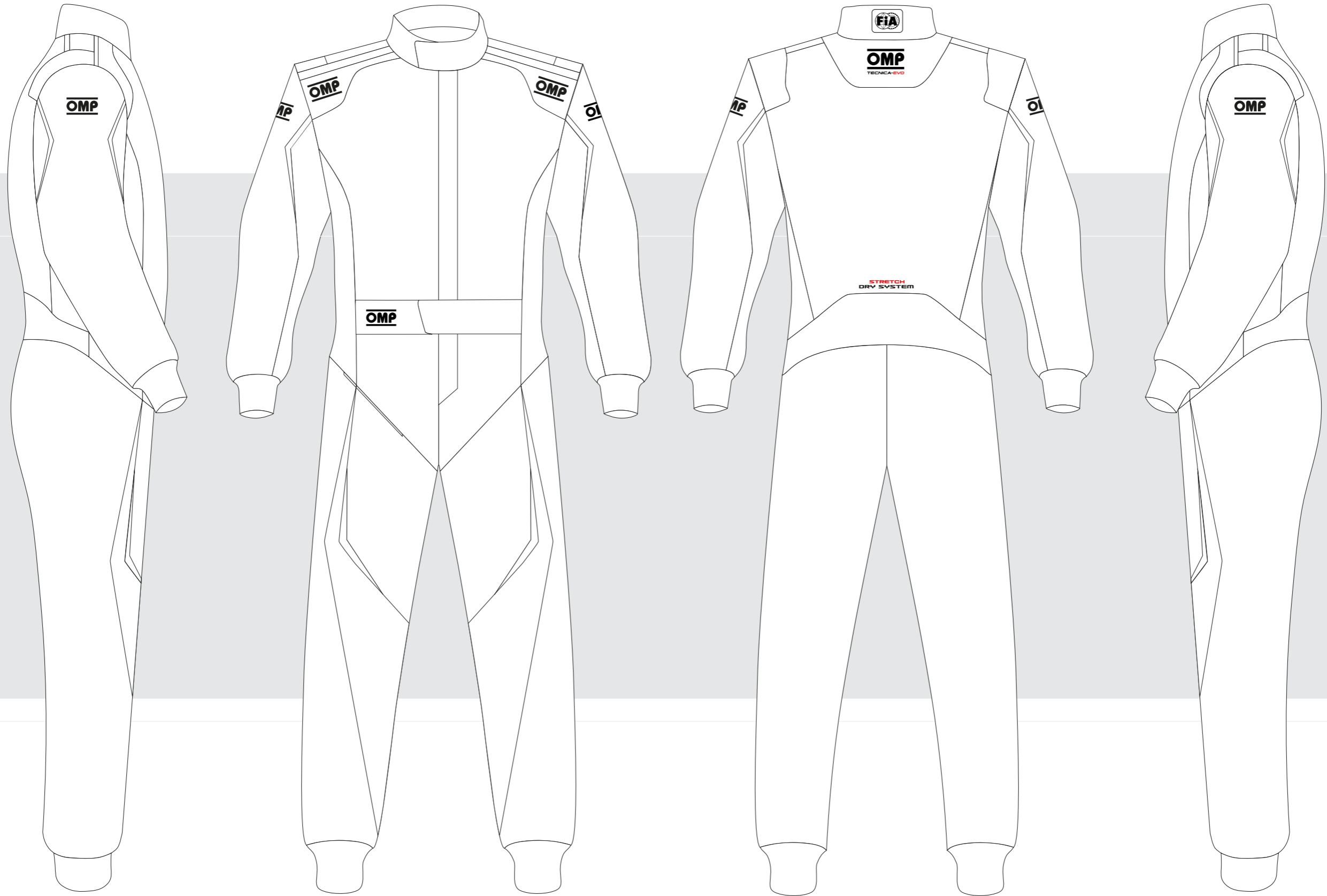
ROYAL BLUE XTI-604-041	RED XTI-604-061	DARK GREY XTI-604-082	BLACK XTI-604-071	WHITE XTI-604-020	FLUO YELLOW XTI-604-099
---------------------------	--------------------	--------------------------	----------------------	----------------------	----------------------------



CUSTOMER: \_\_\_\_\_

TEAM: \_\_\_\_\_

DRIVER NAME: \_\_\_\_\_



CUSTOMIZED SUIT CONFIGURATOR

IA01859E **TECNICA-EVO**

© OMP RACING SPA - ALL RIGHTS RESERVED

THIS DESIGN IS THE INTELLECTUAL PROPERTY OF OMP RACING SPA - ANY REPRODUCTION WITHOUT PERMISSION WILL BE PROSECUTED TO THE FULLEST EXTENT OF THE LAW. By approving this sketch, the customer acknowledges that, during the process of manufacturing, variations may occur in colors and other minor aspects, because of the use of different technologies for the acquisition and reproduction of images, and for the making of the suit itself. OMP is not responsible for such variations and deviations. For further information: [www.ompracing.com](http://www.ompracing.com)

DATE: \_\_\_\_\_ REV. \_\_\_\_\_