

GREY AREA >60% MAIN ASSEMBLY MICROFIBRA FABRIC **WHITE AREA** FOR SHOULDER STRIPES A DIFFERENT AND MONOCHROMATIC COLOR MUST BE USED

CYAN XTI-501-244	ROYAL BLUE XTI-501-041	NAVY BLUE XTI-501-042	VIOLET XTI-501-V	BLACK XTI-501-071	ANTHRACITE X-501-082	SILVER XTI-501-080	WHITE XTI-501-020
JAGUAR GREEN XTI-500-033	GREEN XTI-501-032	LIGHT GREEN XTI-501-039	FLUO YELLOW XTI-501-099	YELLOW XTI-501-055	ORANGE XTI-501-091	FLUO ORANGE XTI-501-090	RED XTI-501-061

BLUE AREA STRETCH FABRIC - NOT PRINTABLE/EMBROIDERABLE

ROYAL BLUE XTI-608-041	NAVY BLUE XTI-608-042	RED XTI-608-061	DARK GREY XTI-608-082	BLACK XTI-608-071	FLUO YELLOW XTI-608-099
---------------------------	--------------------------	--------------------	--------------------------	----------------------	----------------------------

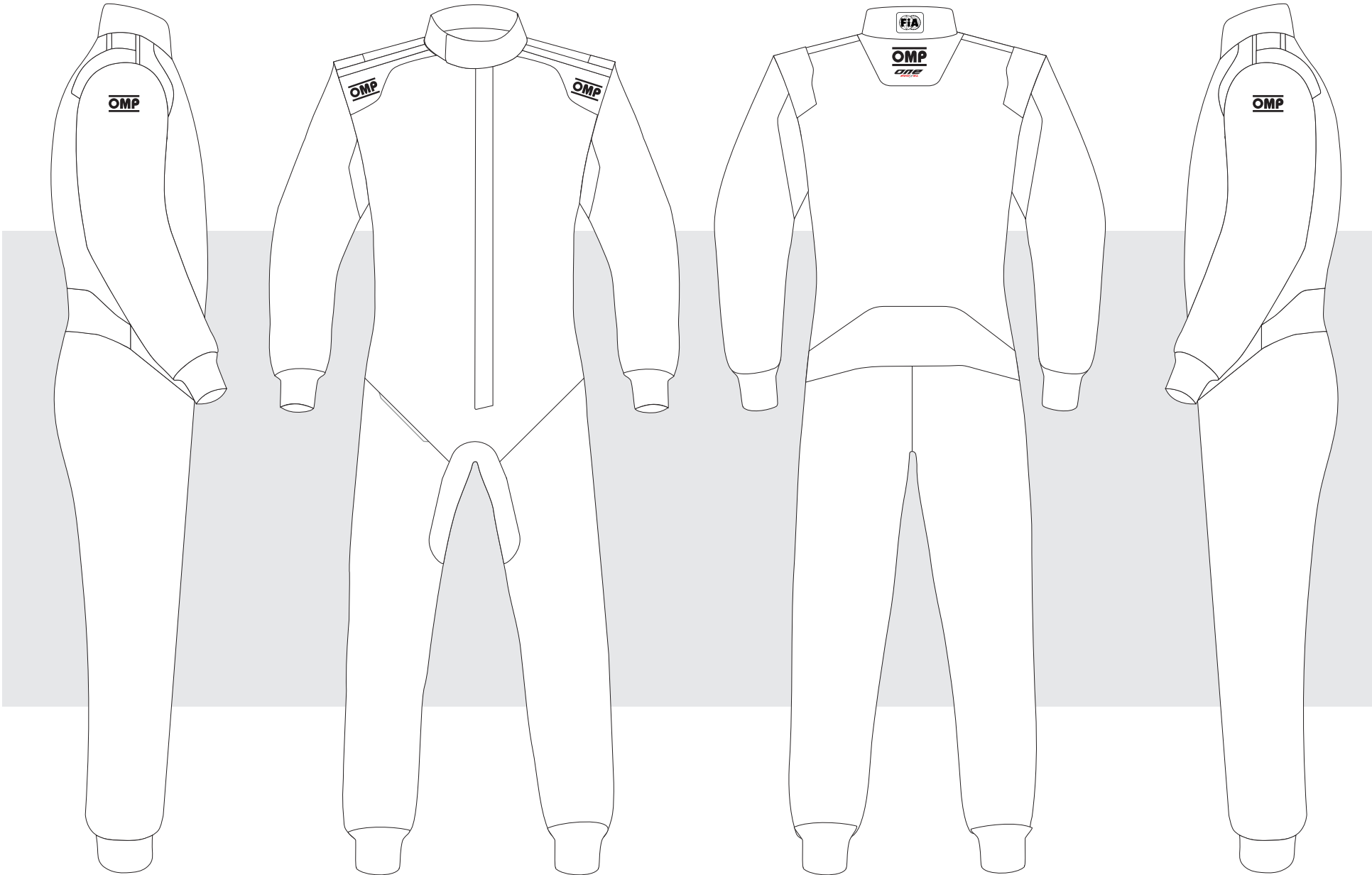
YELLOW AREA WRIST AND ANKLE CUFF'S FABRIC *while stocks last

ROYAL BLUE XTI-105-N-041	NAVY BLUE XTI-105-N-042	RED XTI-105-N-061	DARK GREY XTI-105-N-082	BLACK XTI-105-N-071	SILVER XTI-105-N-081	WHITE XTI-105-N-020	ECRU XTI-105-N-022	YELLOW* XTI-105-N051	BROWN* XTI-105-N010
-----------------------------	----------------------------	----------------------	----------------------------	------------------------	-------------------------	------------------------	-----------------------	-------------------------	------------------------



CUSTOMER: _____ TEAM: _____ DRIVER NAME: _____

CUSTOMIZED SUIT CONFIGURATOR



IA01862

DATE: _____ REV. _____

© OMP RACING SPA - ALL RIGHTS RESERVED

THIS DESIGN IS THE INTELLECTUAL PROPERTY OF OMP RACING SPA - ANY REPRODUCTION WITHOUT PERMISSION WILL BE PROSECUTED TO THE FULLEST EXTENT OF THE LAW. By approving this sketch, the customer acknowledges that, during the process of manufacturing, variations may occur in colors and other minor aspects, because of the use of different technologies for the acquisition and reproduction of images, and for the making of the suit itself. OMP is not responsible for such variations and deviations. For further information: www.ompracing.com